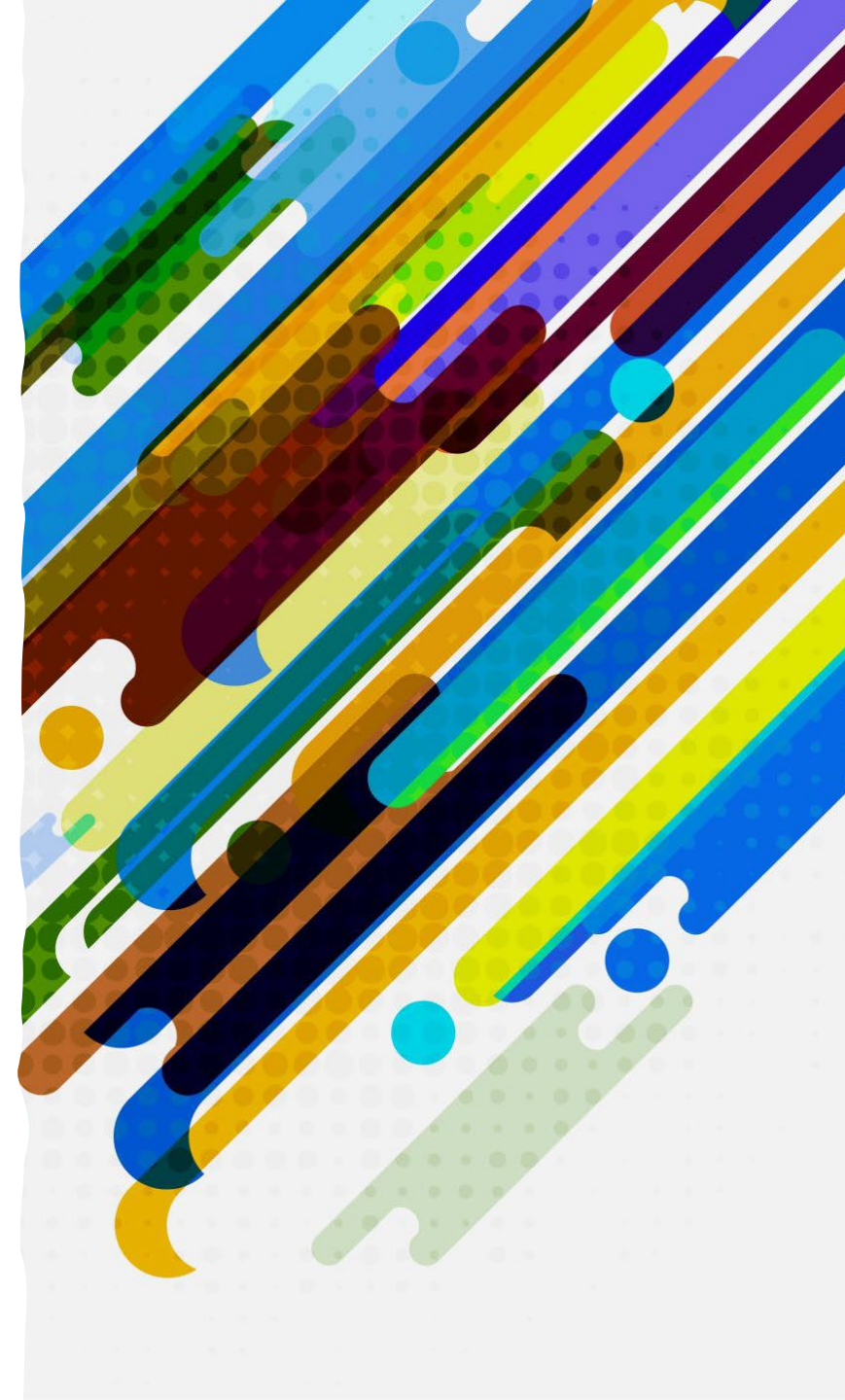


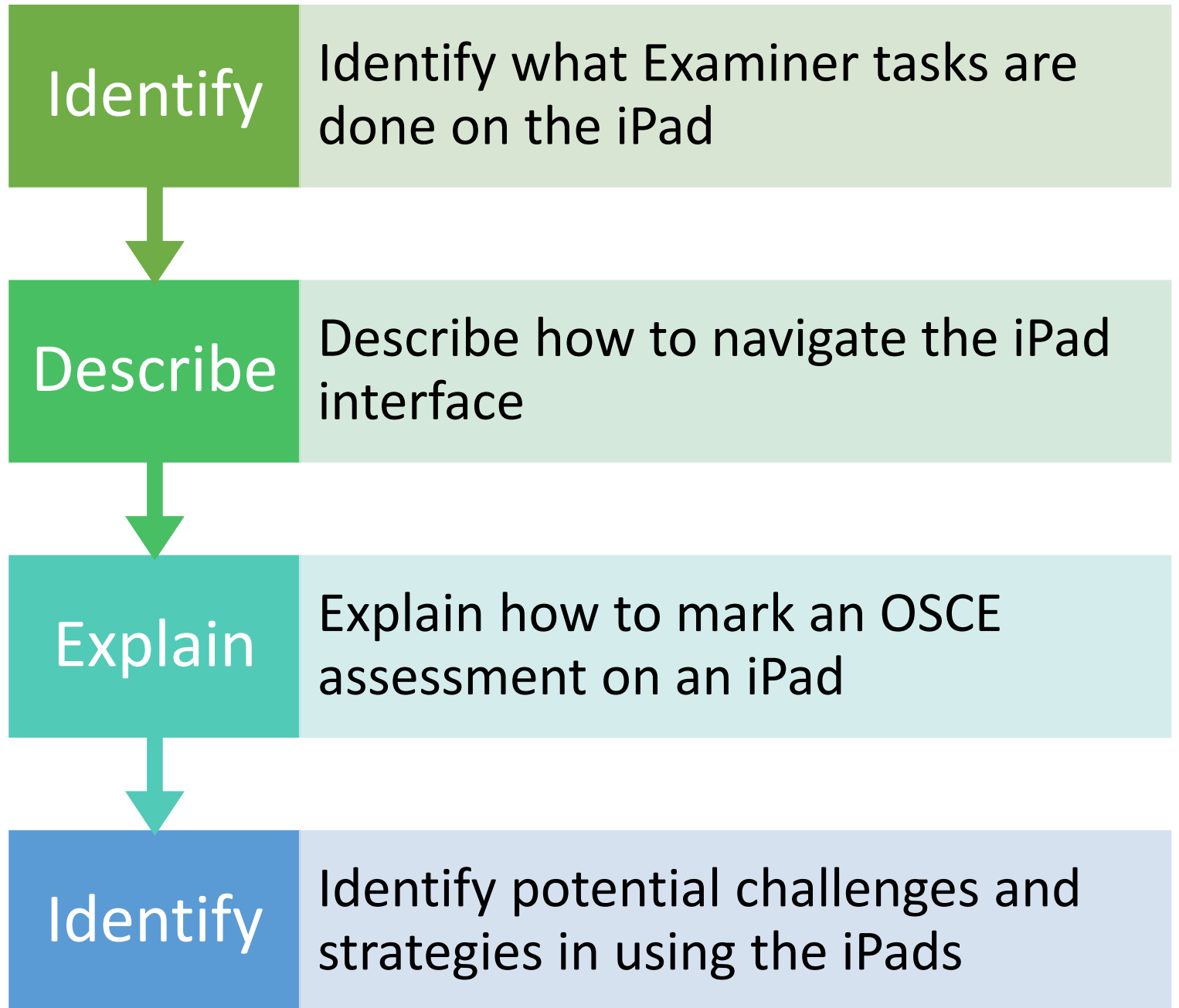
# How to use an iPad for your Role as an OSCE Examiner

---

Hunain Kochra, Manager, Office of Assessment and Evaluation



By the end of  
this session,  
in-person  
OSCE  
examiners will  
be able to:



# What has changed?

- U of T has transitioned to marking OSCE's via iPad
  - Both Foundations and Clerkship
- For Examiners, this allows for the simple collection of assessments
  - No more paper assessments
  - No more MedSIS input

# Teaching Plan

---

- What steps in the OSCE will not use the iPad
- iPad Walkthrough
- Marking the OSCE
- iPad potential challenges and strategies
- Available help and resources



# What steps in the OSCE will NOT use iPads?



Stems – on door and  
in room on paper



Timing – whistles,  
knocks, bells and  
announcements



Additional Info (results) -  
paper handouts for  
learners



**iPads are for Marking  
and viewing  
Resources only**



# iPad Walkthrough

# iPad potential challenges and strategies

- Will iPads be provided?
  - iPads will be at your exam site. You do not need to provide one.
- What if I am unable to sign in?
  - Contact the on-site Administrator for help.
- What if I lose internet connection?
  - Exams are pre-downloaded to the iPads and can work offline.
  - Assessment marks will be uploaded to the network when the internet connection is regained. If you see a message that the internet connection has been lost, please continue marking.
- What if my iPad powers down?
  - iPads will be fully charged before the exam. If the battery level is low, connect the iPad and charging cord into an electrical outlet, alternatively inform the on-site Administrator at the exam who can give you a new iPad

# Available help and resources

**Prior to the OSCE:** [md.oae@utoronto.ca](mailto:md.oae@utoronto.ca)

**During the OSCE:** Contact the on-site Administrator

**Resources:** <https://meded.temertymedicine.utoronto.ca/osce>



Thank-you!